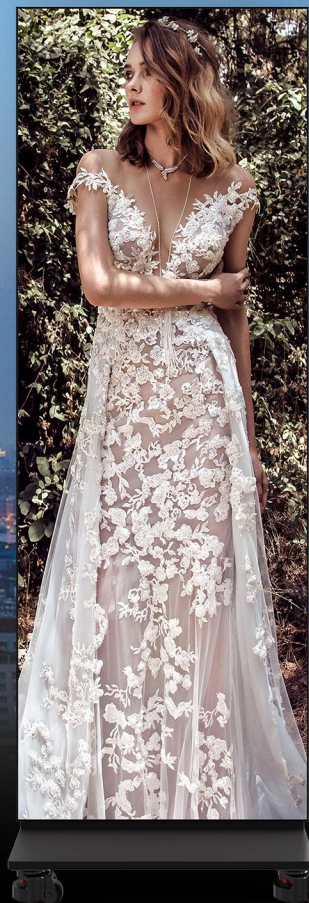




LEDERA

S-POSTER

Indoor Fine Pixel Pitch
Advertising Display

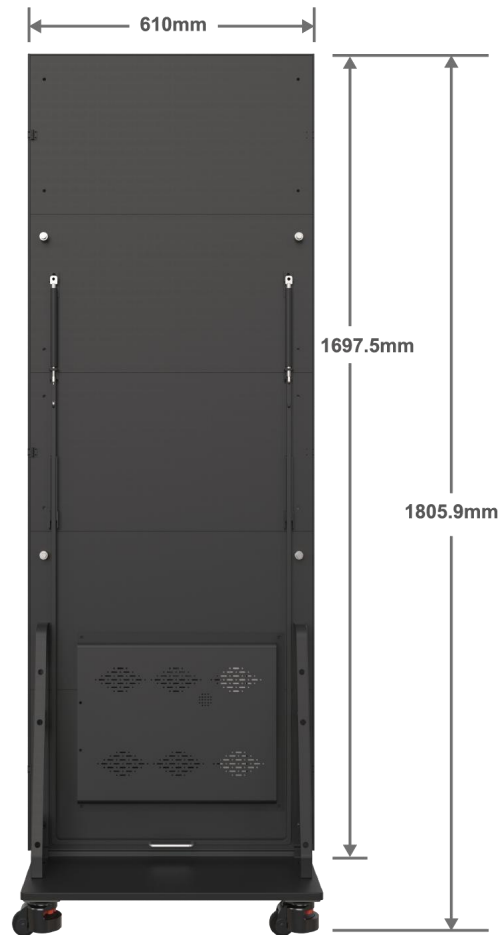
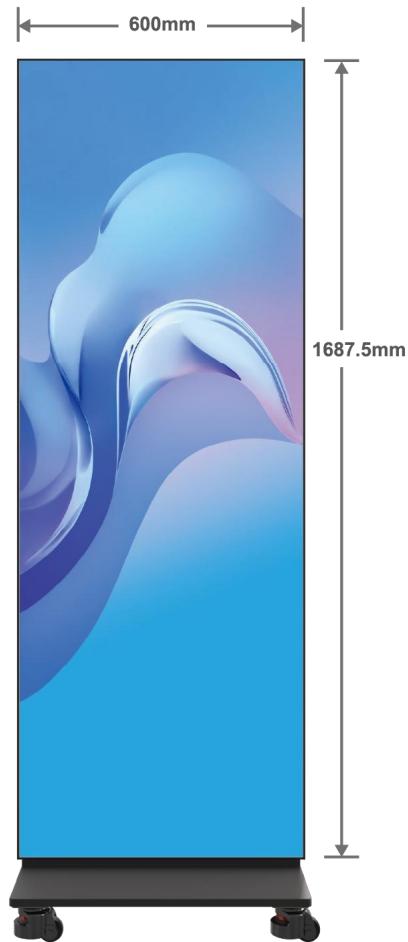


LEDERA TECHNOLOGY CO.,LTD

ALL YOUR IMAGINATIONS CAN BE CREATED

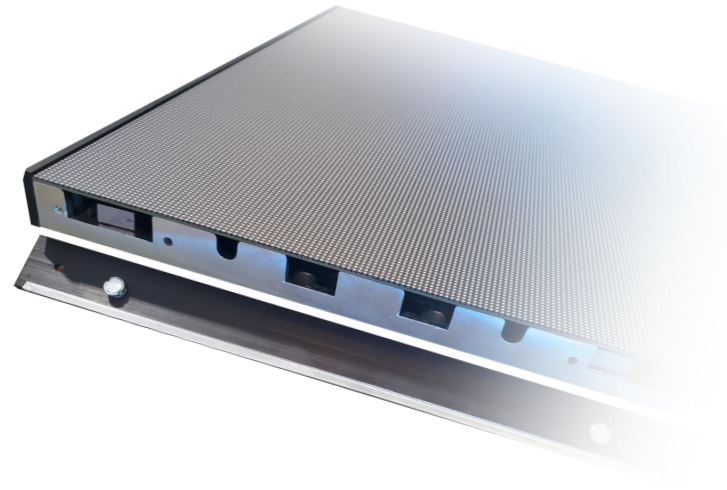
Ultra Thin

Lightweight and Ultrathin (30mm thickness)
Movable with wheels



Edge Infinity Display

The Infinity Display is the signature, virtually bezel-less screen, creating an incredibly immersive viewing experience. Magnetic frame, easy to be spliced.



Multi-Poster Tiling Seamless

Individual S-Posters can be spliced together to form larger displays without removing any exterior trims. Seamlessly spliced.



User Convenience: Front Maintenance

The S-Poster can be easily installed and managed from the front side. The LED modules can also be simply attached or detached with a magnetic tool.

Cable Free & Hot Plugging

No cable between modules and the Hub card, which achieves 100% hard connection.

Hot plugging enables modules to be replaced and installed without downtime.



Wireless Control

Use an app to control the S-Poster such as changing the content, adjusting the brightness and etc.



Cloud Control Worldwide Network

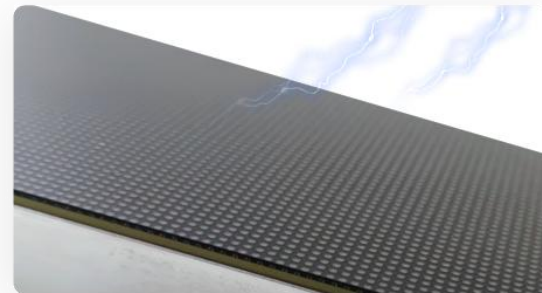
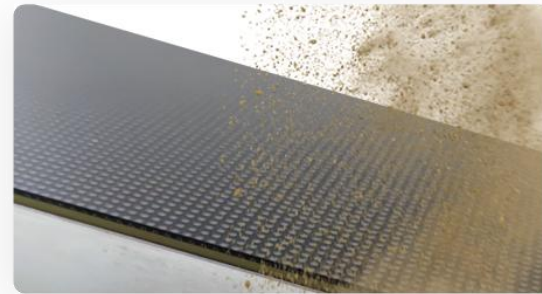
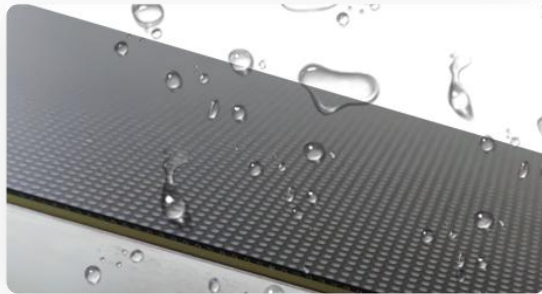
Cloud programming - multiple posters can be easily managed by a team (programmed and controlled) through a cloud software platform.



TOP-COB Technology

High Protection

Through the TOP-COB Process, a surface coating is made to have the whole PCBA board fully sealed with epoxy resin, which enhances the protection level and protects the screen from many physical damages. S-posters are easy to clean and they are anti-fogging, dust-proof, abrasion-proof, damp-proof, anti-collision, anti-oil, antistatic, anti-oxidation and etc.



Specification	6312-A	6318-A	6325-A
Pixel Pitch(mm)	1.2mm	1.8mm	2.5mm
Resolution	480x1350	320x900	240x640
External Dimension(mm)	600x1687.5x30(mobile base:600x500)		
Weight	32.1kg(Without Base)		
Brightness	500-1200 cd/m2Adjustable		
Color Temperature	2500k-10000k Adjustable		
Viewing Angle (H/V)	160°/140°		
Refresh Rate	≤3840Hz		
Gray Scale	≤16bit		
Voltage(V)	AC 90-264VAC, 47-63 HZ		
Power Consumption(Max.)	300-450W		
Power Consumption(Avg.)	150-225W		
Maintenance Mode	Front maintenance		
Operation/Storage temperature and humidity	-20°C-60°C/ 20%-90%RH		
Communication Mode	WiFi/4G		
Display Mode	Synchronous/ Asynchronous		
Operation System	Windows/Android		

The parameter index will change according to the specific situation of the project (the product shall be subjected to the submitted contract specification)

LEDERA TECHNOLOGY CO.,LTD

TEL: (+86)132 4242 5016 WEB: www.ledera-tech.com

ADD: 410A, TINNO Building, No. 33 Xiandong Road, Xili Town, Nanshan District, Shenzhen 518054

