



ALL YOUR IMAGINATIONS CAN BE CREATED

# Navigator Series

## Ultra Wide Indoor Fine Pixel Pitch Display

The Navigator Series is an exceptional ultra-high-definition product specifically designed for the demanding display market.

It excels in various control field applications such as security monitoring, command centers, conference rooms, esports, and broadcasting, offering unparalleled visual performance.



**16 bit**   
grayscale

Up to  
**1200nits**   
peak brightness for your  
HDR photos and videos

**≥3840**  
high refresh rate

**2000-12000K**   
color temp

**21:9**   
ultra-wide ratio





21:9 Ultra-Wide Ratio



Big COB Module



Full Flip Chip+ Common Cathode



Less Splicing Lines



Dual Backup

**LT LEDERA**



## 21:9 Ultra-Wide Ratio:

With its unique 21:9 design, it is perfectly suited for esports and ultra-wide screen conference system.

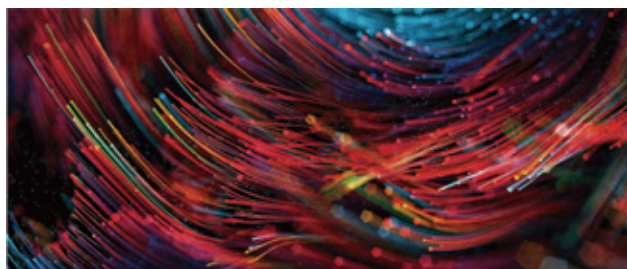


## Product Display

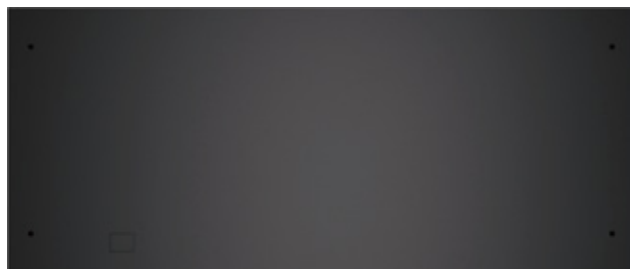


800mm

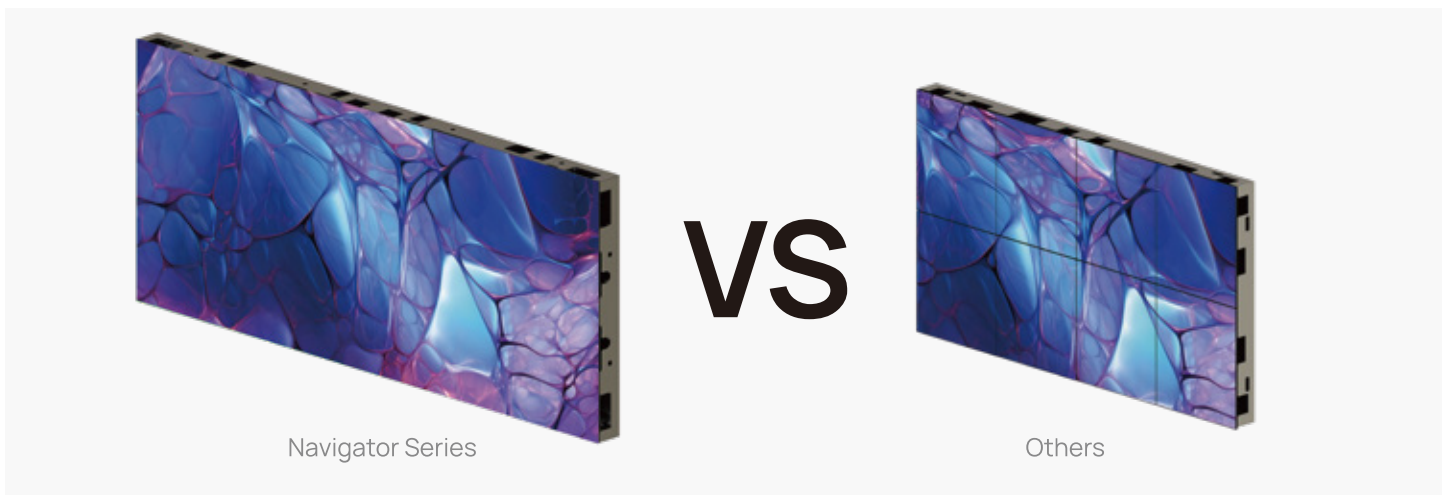
38mm



337.5mm







## Big COB Module:

As a COB upgrade product, the module size of the Navigator Series is 200x 337.5mm, while the module size of other companies' COB products is 150x168.75mm. This enables the Navigator Series to achieve faster splicing and better display effects.



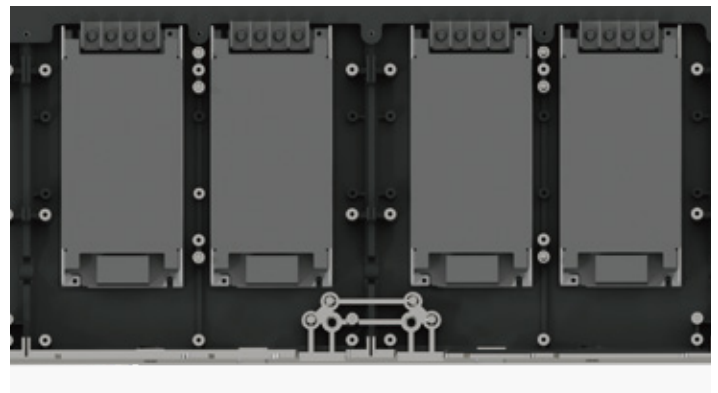
## Full Flip Chip+Common Cathode:

Energy-efficient with low power consumption, high refresh rate, HDR for high dynamic picture display, and 16-bit high gray for low brightness.



## Less Splicing Lines:

Support full front maintenance, featuring hot-plug modules and cable-free connection. This design saves time and labor, thereby making users handle the LED screen with ease.



## Dual Backup:

In the event of a failure of the main receiving card or power supply, the backup system will automatically switch over to ensure that the display is not interrupted, providing stronger stability and reliability for the large-screen display.

# Navigator Series Specification

## SMD

	83A12	83A15	83A18	83A25
Pixel Pitch (mm)	P1.25	P1.56	P1.8	P2.5
Cabinet Resolution (W×H)	640×270	512×216	424×180	320×135
Pixel Density (dots/m²)	640,000	409,600	282,666	160,000
Cabinet Size (mm) (W×H×D)	800×337.5×38	800×337.5×38	800×337.5×38	800×337.5×38
Brightness (nits)	≤800	≤800	≤800	≤1200
Gray Scale (bit)	14~16	14~16	14~16	14~16
Pixel Calibration	Support brightness and color calibration	Support brightness and color calibration	Support brightness and color calibration	Support brightness and color calibration
Color Temp (K)	2000~12000 (Adjustable)	2000~12000 (Adjustable)	2000~12000 (Adjustable)	2000~12000 (Adjustable)
Control System	Synchronous control	Synchronous control	Synchronous control	Synchronous control
Drive Mode	Constant current drive (Compatible)	Constant current drive (Compatible)	Constant current drive (Compatible)	Constant current drive (Compatible)
Frame Rate (Hz)	50/60	50/60	50/60	50/60
Refresh Rate (Hz)	≥3840	≥3840	≥3840	≥3840
Working Voltage (V)	AC: 100V~240V, 50~60Hz	AC: 100V~240V, 50~60Hz	AC: 100V~240V, 50~60Hz	AC: 100V~240V, 50~60Hz
Max. Power Consumption (W/m²)	≤725	≤680	≤600	≤780
Avg. Power Consumption (W/m²)	≤280	≤270	≤240	≤310
Lifetime (H)	100,000	100,000	100,000	100,000
Operation Temp (°C)	-10~+40	-10~+40	-10~+40	-10~+40
Storage Temp (°C)	-20~+60	-20~+60	-20~+60	-20~+60
Operation Humidity (RH)	10%~80%	10%~80%	10%~80%	10%~80%
Cabinet Weight (kg)	6.8	6.8	6.8	6.8

## COB

	83A12C	83A15C
Pixel Pitch (mm)	P1.25	P1.56
Cabinet Resolution (W×H)	640×270	512×216
Pixel Density (dots/m²)	640,000	409,600
Cabinet Size (mm) (W×H×D)	800×337.5×38	800×337.5×38
Brightness (nits)	≤1000	≤1000
Gray Scale (bit)	14~16	14~16
Pixel Calibration	Support brightness and color calibration	Support brightness and color calibration
Color Temp (K)	2000~12000 (Adjustable)	2000~12000 (Adjustable)
Control System	Synchronous control	Synchronous control
Drive Mode	Constant current drive (Compatible)	Constant current drive (Compatible)
Frame Rate (Hz)	50/60	50/60
Refresh Rate (Hz)	≥3840	≥3840
Working Voltage (V)	AC: 100V~240V, 50~60Hz	AC: 100V~240V, 50~60Hz
Max. Power Consumption (W/m²)	≤450	≤450
Avg. Power Consumption (W/m²)	≤180	≤180
Lifetime (H)	100,000	100,000
Operation Temp (°C)	-10~+40	-10~+40
Storage Temp (°C)	-20~+60	-20~+60
Operation Humidity (RH)	10%~80%	10%~80%
Cabinet Weight (kg)	6.8	6.8

The parameter index will change according to the specific situation of the project (the product shall be subjected to the submitted contract specification)

## LEDERA TECHNOLOGY CO.,LTD

☎ (+86)132 4242 5016    🌐 [www.ledera-tech.com](http://www.ledera-tech.com)

✉ [bruce@ledera-tech.com](mailto:bruce@ledera-tech.com)

📍 410A, TINNO Building, No. 33 Xiandong Road, Xili Town, Nanshan District, Shenzhen 518054

