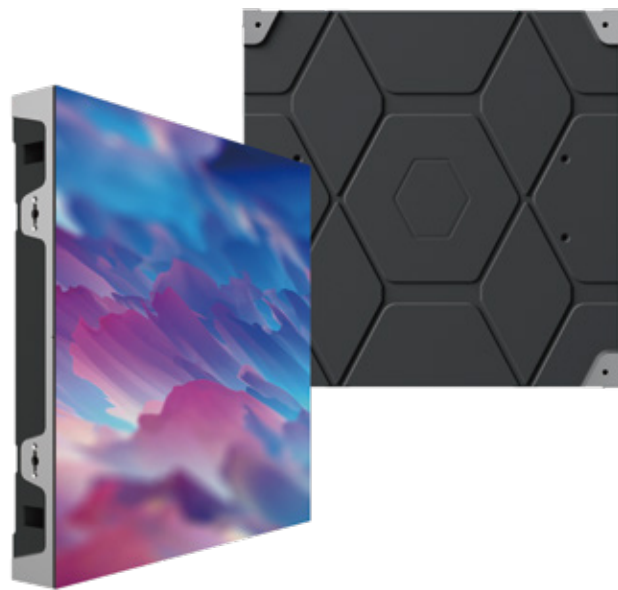




ALL YOUR IMAGINATIONS CAN BE CREATED

Diamonds Series

Ultra HD Indoor Fine Pixel Pitch LED Display



PRODUCT OVERVIEW



The Diamonds Series is a self-developed, ultra-high-definition product designed for the fine-pitch LED display market. It is primarily used in various control fields, including security monitoring, command dispatch, video conferencing, XR, and broadcasting, to provide high-quality display applications.



GOB High Protection



Full and Half Size



Easy Maintenance

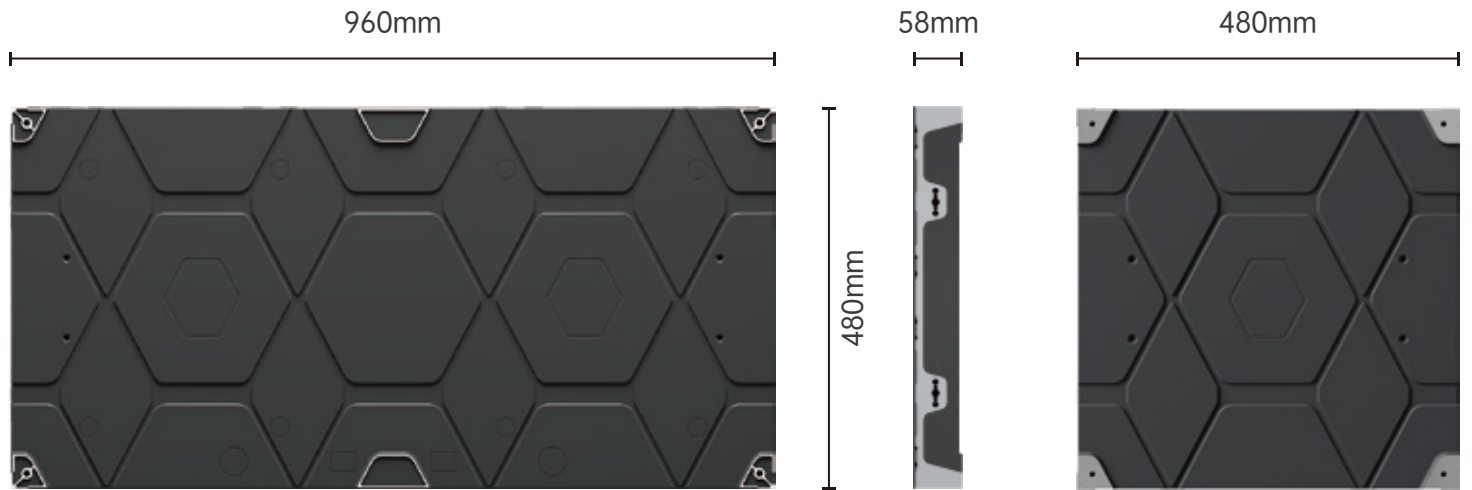


Fine Pitch LED Floor

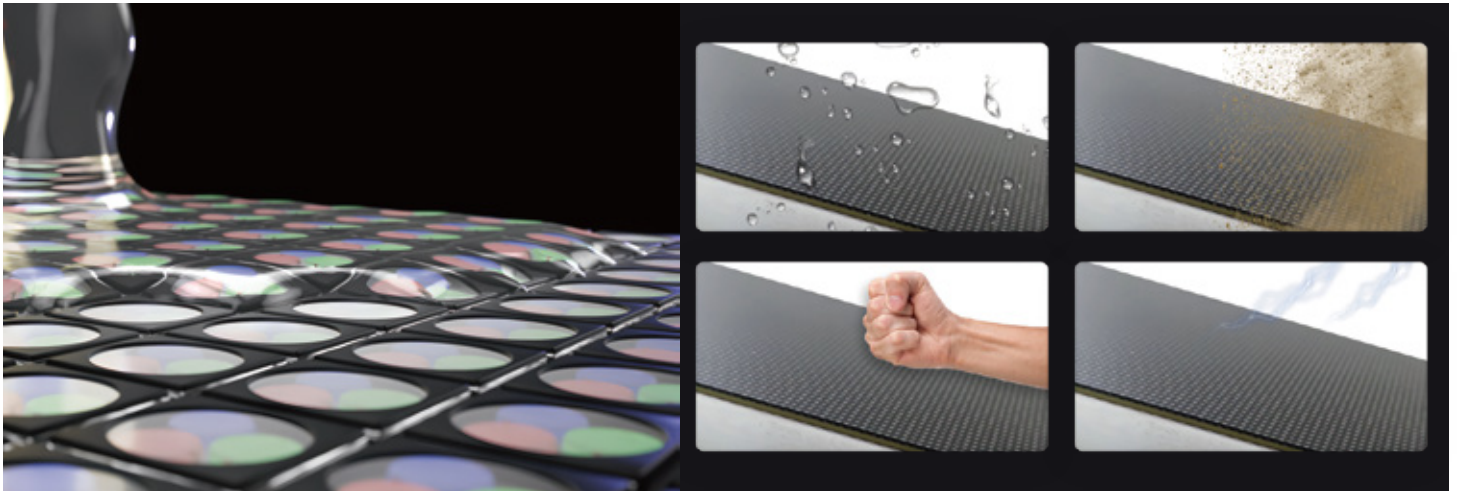
PRODUCT DISPLAY

960*480*58

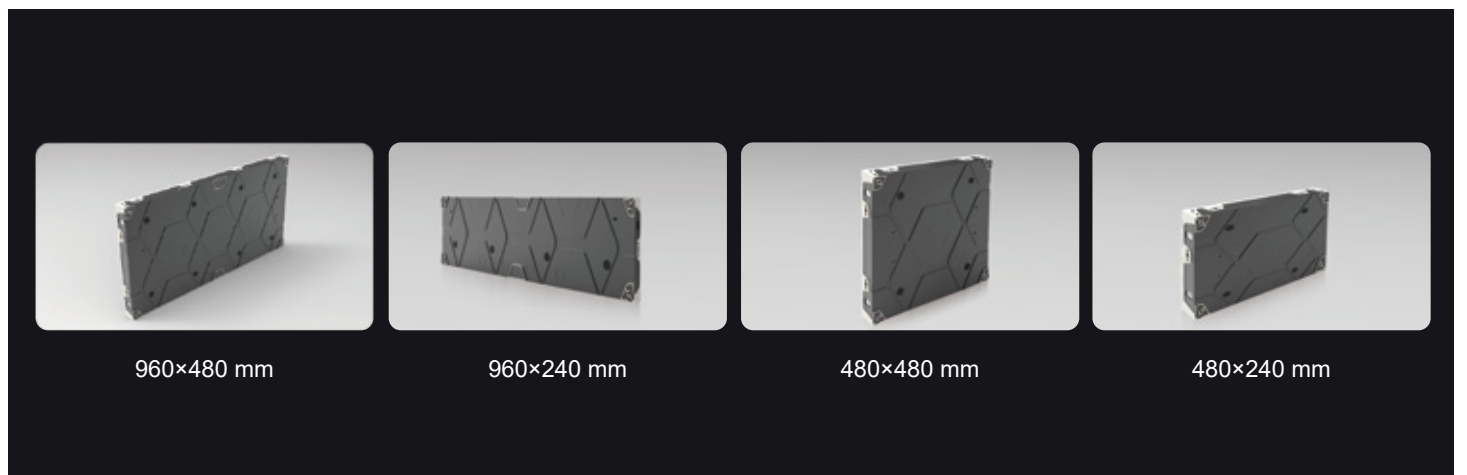
480*480*58



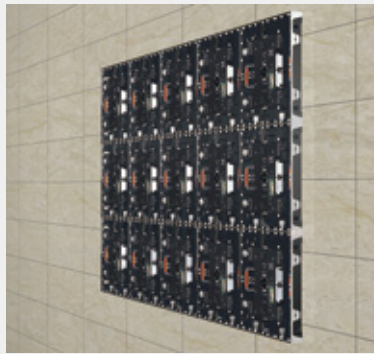
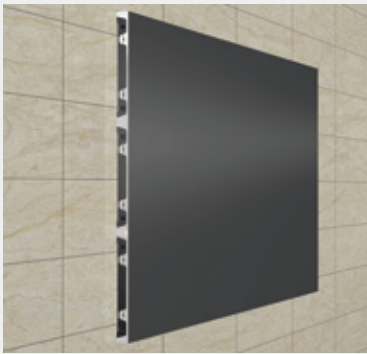
PRODUCT FEATURES



GOB High Protection: Special treatment with GOB technology, enabling surface water- resistant, dust-resistant, impact-resistant and anti-static.

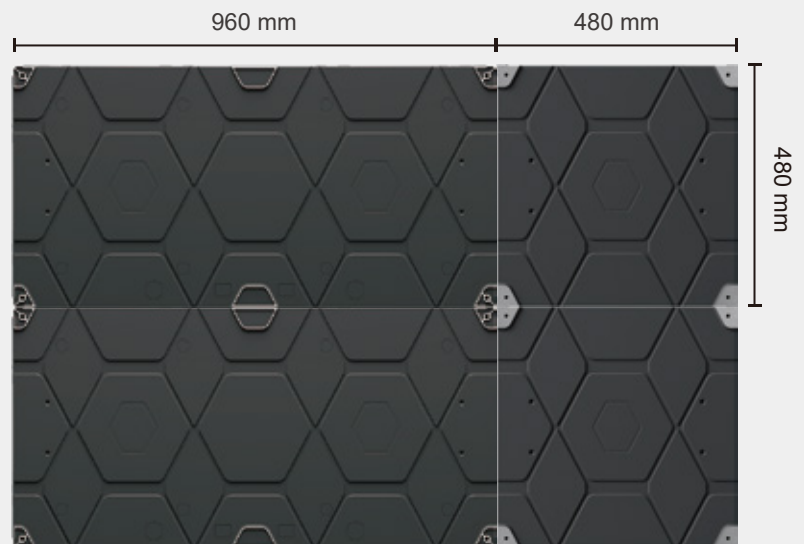


Full and Half Size: Customizable cabinet sizes are available to meet the specific needs of different application scenarios as per customer requirements.

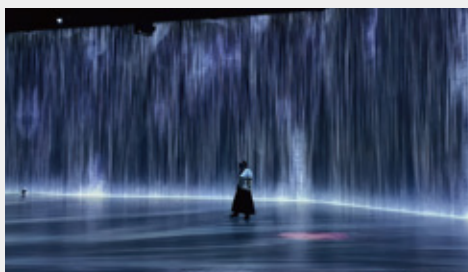


Easy Maintenance: Support full front maintenance, featuring hot-plug modules and cable-free connection.

Cabinet sizes of 960×480mm and 480×480mm are designed to be compatible, allowing for mixed splicing.



APPLICATIONS



Diamonds Series Specification

	94B12	94B15	94B18	94B25	94B30
Pixel Pitch (mm)	P1.25	P1.579	P1.875	P2.5	P3.0
Cabinet Resolution (W×H)	768×384	608×304	512×256	384×192	320×160
Pixel Density (dots/m²)	640,000	401,084	284,444	160,000	111,111
Pixel Configuration	SMD1010	SMD1010	SMD1515	SMD2121	SMD2121
Cabinet Size (mm)(W×H×D)	960×480×58, compatible with 480×480 unit cabinet				
Brightness (nits)	200~800				
Gray Scale (bit)	10~16				
Pixel Calibration	Support brightness and color calibration				
Color Temp (K)	2000~12000 (Adjustable)				
Control System	Synchronous control				
IP Level	IP41				
Drive Mode	Constant current drive (Compatible)				
Frame Rate (Hz)	60/120 (3D)				
Refresh Rate (Hz)	≤3840				
Working Voltage (V)	AC: 100V~240V, 50~60Hz				
Max. Power Consumption (W/m²)	≤725	≤680	≤600	≤520	≤440
Avg. Power Consumption (W/m²)	≤290	≤270	≤240	≤200	≤170
Lifetime (H)	100,000				
Operation Temp (°C)	-10~+40				
Storage Temp (°C)	-20~+60				
Operation Humidity (RH)	10%~80%, no condensation				
Cabinet Weight (kg)	10.6				

	48D12	48D15	48D18	48D25
Pixel Pitch (mm)	P1.25	P1.579	P1.875	P2.5
Cabinet Resolution (W×H)	384×384	304×304	256×256	192×192
Pixel Density (dots/m²)	640,000	401,084	284,444	160,000
Pixel Configuration	SMD1010	SMD1010/1212	SMD1515	SMD2121
Cabinet Size (mm)(W×H×D)	480×480×58			
Brightness (nits)	200~800			
Gray Scale (bit)	10~16			
Pixel Calibration	Support brightness and color calibration			
Color Temp (K)	2000~12000 (Adjustable)			
Control System	Synchronous control			
IP Level	IP41			
Drive Mode	Constant current drive (Compatible)			
Frame Rate (Hz)	50/60			
Refresh Rate (Hz)	≤3840			
Working Voltage (V)	AC: 100V~240V, 50~60Hz			
Max. Power Consumption (W/m²)	≤725	≤680	≤600	≤520
Avg. Power Consumption (W/m²)	≤290	≤270	≤240	≤200
Lifetime (H)	100,000			
Operation Temp (°C)	-10~+40			
Storage Temp (°C)	-20~+60			
Operation Humidity (RH)	10%~80%, no condensation			
Cabinet Weight (kg)	5.85			

The parameter index will change according to the specific situation of the project (the product shall be subjected to the submitted contract specification)

LEDERA TECHNOLOGY CO.,LTD

☎ (+86)132 4242 5016 🌐 www.ledera-tech.com

✉ bruce@ledera-tech.com

📍 410A, TINNO Building, No. 33 Xiandong Road, Xili Town,
Nanshan District, Shenzhen 518054